

# SWH Unified Power

Standard, Networked and  
**ProWire** Configurations



## UNIFIED CONFIGURATIONS

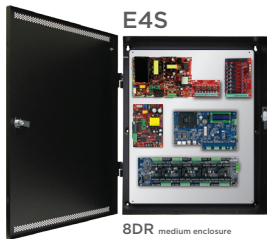
power, lock power and controllers integrated into one secure, UL listed enclosure.

DOORS	STANDARD PN	NETWORKED PN	12VDC	24VDC	ENCL H x W x D	DUAL VOLTAGE POWER DISTRIBUTION
Rackmount	RGS150B-D8Z	RGS150B-M8NZ	4A	4A	RGS R2U	8 auxiliary outputs
Edge	FPO75-B100C4D8E2S	FPO75-B100M8NL4E2S	2A	2A	20 x 16 x 4.5	4 lock outputs / 8 auxiliary outputs
4	FPO75-B100C4D8E4S	FPO75-B100M8PNL4E4S	2A	2A	24 x 20 x 6.5	4 lock outputs / 8 auxiliary outputs
8	FPO150-B100C8D8E4S	FPO150-B100D8M8NL4E4S	4A	4A	24 x 20 x 6.5	8 lock outputs / 8 auxiliary outputs
8	FPO150-B100C8D8E6S	FPO150-B100D8M8NL4E6S	6A	6A	30 x 23 x 6.5	8 lock outputs / 8 auxiliary outputs
16	FPO150/250-2C82D8E8S	FPO150/250-2D82M8NL4E8S	12A	10A	36 x 30 x 6.5	16 lock outputs / 16 auxiliary outputs
32	FPO250/250/250-4C84D8E12S	FPO250/250/250-4D84M8NLXE12S	12A	20A	48 x 30 x 8.5	32 lock outputs / 32 auxiliary outputs
<b>NEW Level III Managed Power Systems</b> with both lock <b>and auxiliary</b> managed outputs						
8		FPO150-B100M8NL42SD4E6S	4A	4A	30 x 23 x 6.5	8 lock outputs / 8 auxiliary outputs - all managed
16		FPO150/250-2M8NLXSD16E8S	12A	10A	36 x 30 x 6.5	16 lock outputs / 16 auxiliary outputs - all managed

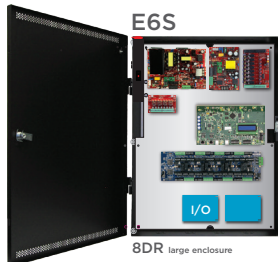
Accessory modules C8, D8, M8 have fused outputs. For accessory modules with class II PTC outputs, add "P" to the module part number (i.e. C8, D8, M8P)

## SWH PATTERNS

Controller Layout Illustration



**E4S**  
 8DR medium enclosure  
 Outputs  
 8 auxiliary / 8 control



**E6S**  
 8DR large enclosure  
 Outputs  
 8 auxiliary / 8 control



**E6S**  
 16DR ULTRA  
 Outputs  
 16 auxiliary



**E8S**  
 16DR ULTRA SE  
 Outputs  
 16 auxiliary / 16 control

## SOFTWARE HOUSE ENCLOSURES

TYPE	ENCLOSURE	WEIGHT	MAX FIT	ON DOOR
Edge	E2S 20 x 16 x 4.5	17 lbs (7kg)	Edge G2	
4-8DR	E4S 24 x 20 x 6.5	31 lbs (14kg)	GCM (1) ACM	
16DR	E6S 30 x 23 x 6.5	46 lbs (21kg)	GCM (2) ACM	
16DR	E6S1 30 x 23 x 6.5	48 lbs (22kg)	GCM (2) ACM	YES
16DR	E8S 36 x 30 x 6.5	74 lbs (34kg)	GCM (2) ACM	
32DR	E12S 48 x 36 x 8.0	120 lbs (55kg)	GCM (4) ACM	



**E2S**  
 EDGE Power






**Agency Listings** | UL294 / UL1076 / UL2610 / ULC S318 / ULC S319  
 IEC 62368-1:2014 | EN 55032:2015 | EN6100-3-2:2014 | EN6100-3-3:2013 | EN55024:2010+A1:2015

FLEXPOWER's unique mix and match modularity creates many listed configurations - contact factory with requirements

**SWH PSX PROWIRE\* CONFIGURATIONS**

*factory prewired for system power, lock power, communication, faults and tamper switch*

Doors	Power/Outputs	Enclosure	Cabling	Base Model	*Wiring	Panel Layout
8DR	12V/6A and 24V/6A Outputs: ULTRA: 8 aux SE STD: 8 aux, 8 lock SE NET: 8 aux, 8 mgd	E4S 24 x 20 x 6.5	Tie wrap	Standard PSX-WISU08-E4S	8 Reader ISTAR ULTRA	
				Networked PSX-WISU08-E4SN		
				Standard PSX-WSE08-E4S	8 Reader ISTAR ULTRA SE	
				Networked PSX-WSE08-E4SN		
16DR	12V/12A and 24V/10A Outputs: ULTRA: 16 aux SE STD: 16 aux, 16 lock SE NET: 16 aux, 16 mgd	E8S 36 x 30 x 6.5	Tie wrap	Standard PSX-WISU16-E8S	16 Reader ISTAR ULTRA	
				Networked PSX-WISU16-E8SN		
			Tie wrap	Standard PSX-WSE16-E8S	16 Reader ISTAR ULTRA SE	
				Networked PSX-WSE16-E8SN		
			Panduit style	Standard PSX-WPISU16E8S	16 Reader ISTAR ULTRA	
				Networked PSX-WPISU16E8S		
8DR RM	12V/4A & 24V/4A ULTRA STD: 8 aux 8 lock ULTRA NET: 8 mgd SE STD: 8 aux, 8 lock SE NET: 8 mgd	SWH GEMINI R2U RACK DRAWER	Tie wrap	Standard PSX-WISU8-RGS	8 Reader ISTAR ULTRA	
				Networked PSX-WISU8N-RGS		
				Standard PSX-WSE8-RGS	8 Reader ISTAR ULTRA SE	
				Networked PSX-WSE8N-RGS		

\*Software House Prewired systems are sold exclusively through Software House

**Controller Wiring Options** (e.g. T8-A)

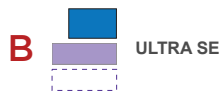
**Wire Management**

T = Tie wrap  
 P = Panduit



**Door Count**

4, 8, 16



**Panel Wiring**

A, B, C



*Color coded lock wiring*



*Data sheets*



*Wiring Guide*



16 Door Managed ProWire  
**PSX-WPISU16E8S**

See Software House PSX ProWire data sheets / wiring guide for detailed specifications